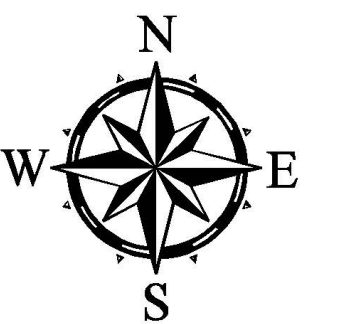
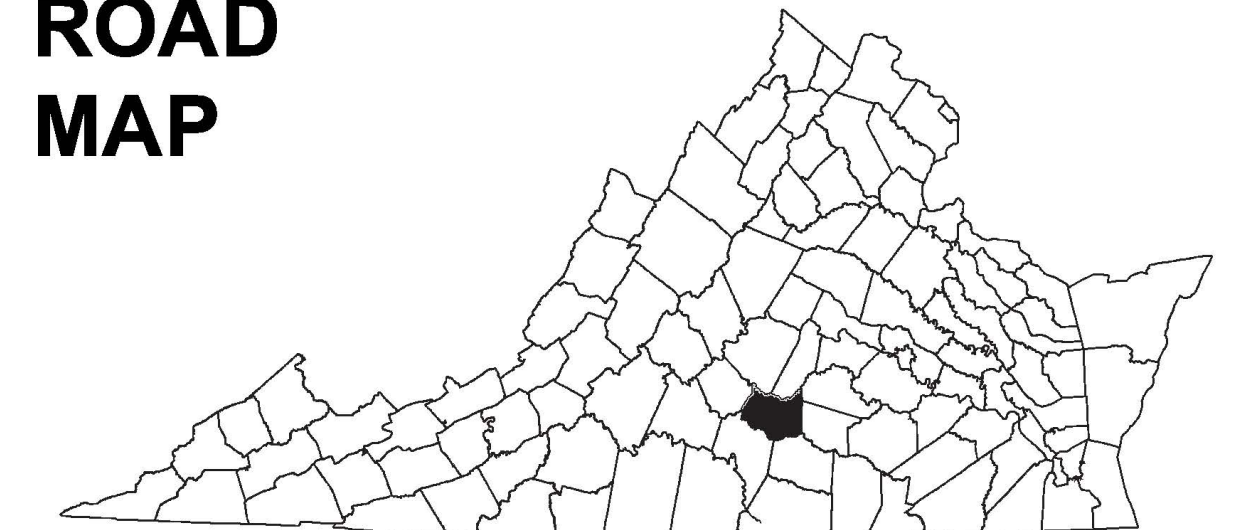


PRINCE EDWARD COUNTY, VA



COUNTY ROAD MAP



PRINCE EDWARD COUNTY

ROAD CLASSIFICATIONS

- Frontage Road
- Secondary Route
- State Route
- U.S. Route
- Urban Road
- LightSurface
- DividedHwyInterstate
- AllWeatherSurface
- Unsurfaced
- otherSurface
- BikeRoutes
- AppalachianTrail
- Scenic Roads

MISCELLANEOUS

- Schools
- Seaports
- Park_RideLots

AIRPORTS

- Commercial
- General
- Military

RAILROADS

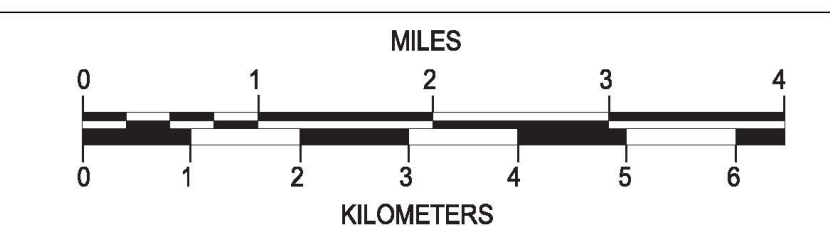
- Metro
- VARailroads
- Park_N_Ride

BOUNDARIES

- MilitaryAreas
- MagisterialDistricts
- Incorp_Areas
- Natural_LandCover

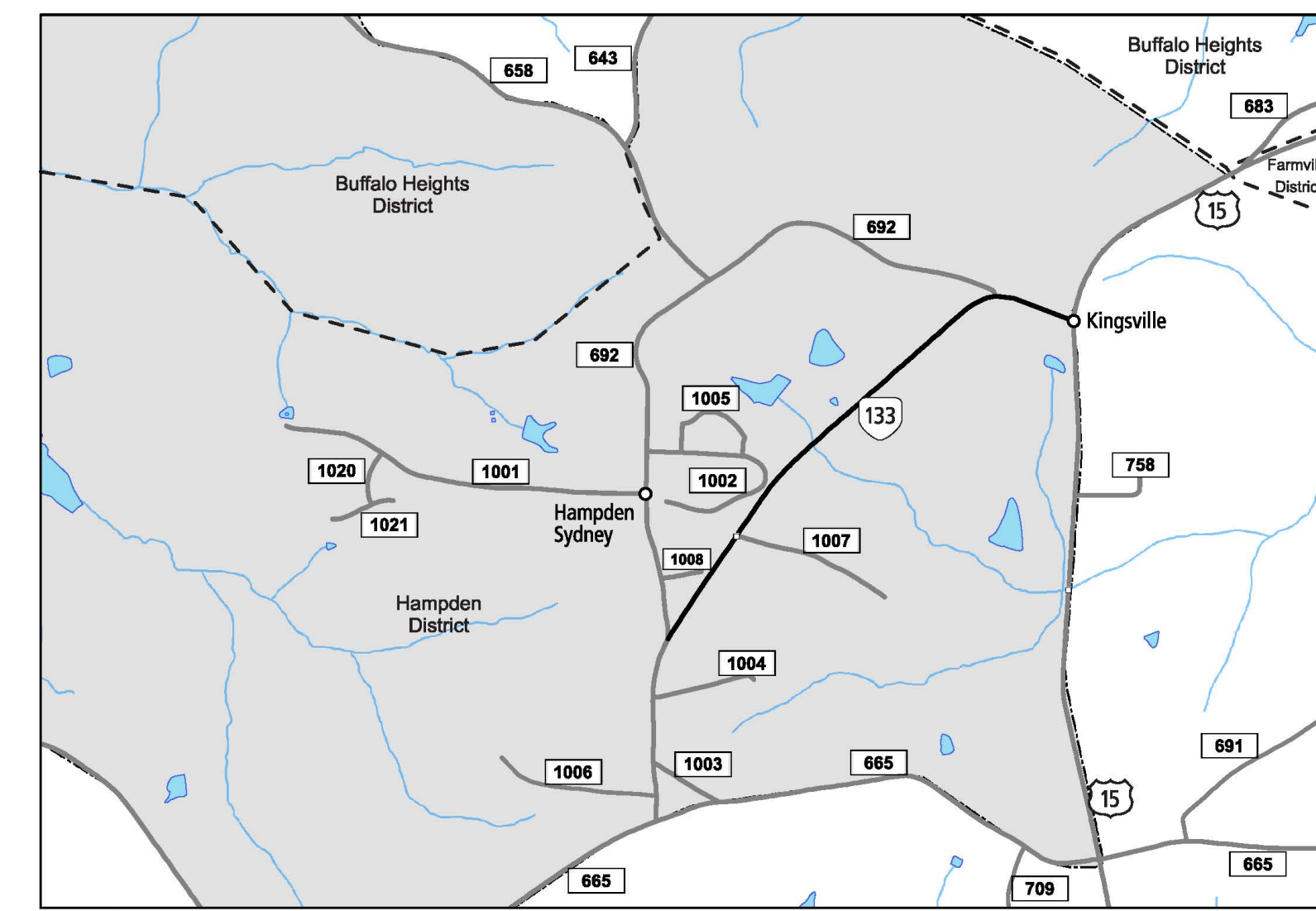
Additional ROAD CLASSIFICATION (Post 2019)

Hard-surface

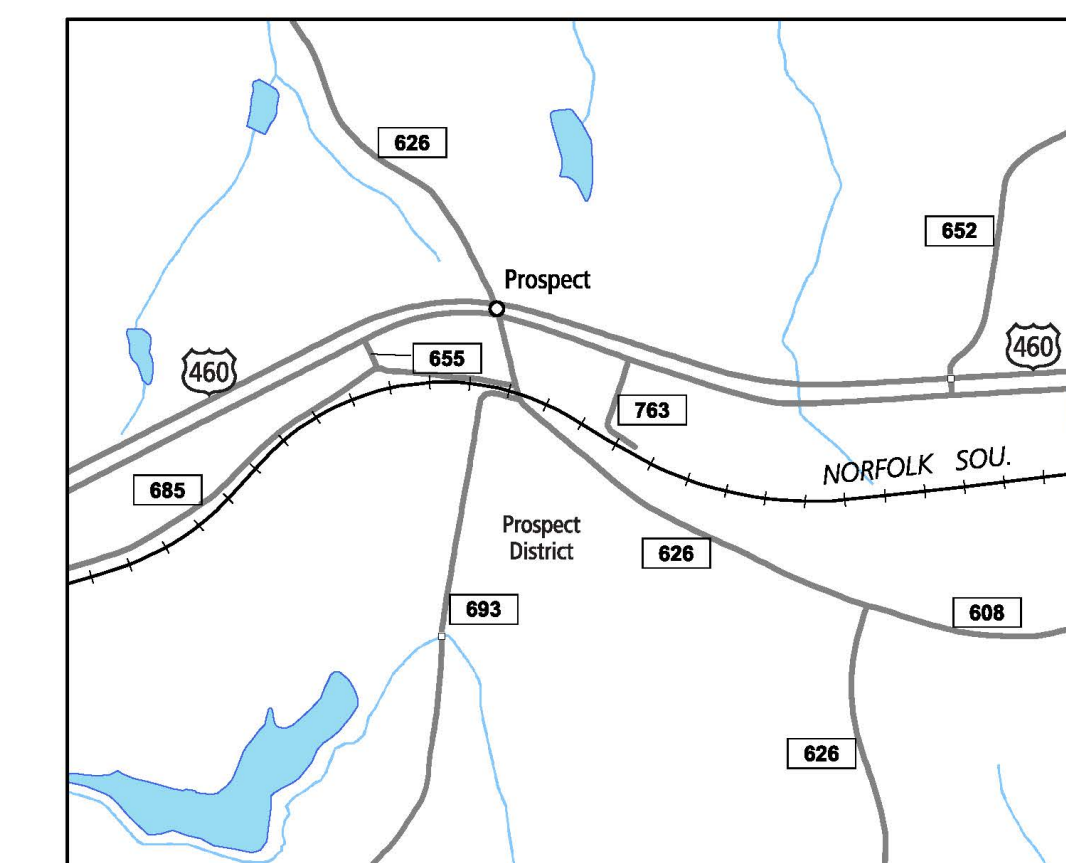


The accuracy or completeness of this map is not guaranteed or warranted. Map depicts state-maintained highway network as of May 1, 2021. Copyright © 2021 by Commonwealth of Virginia Department of Transportation, All Rights Reserved

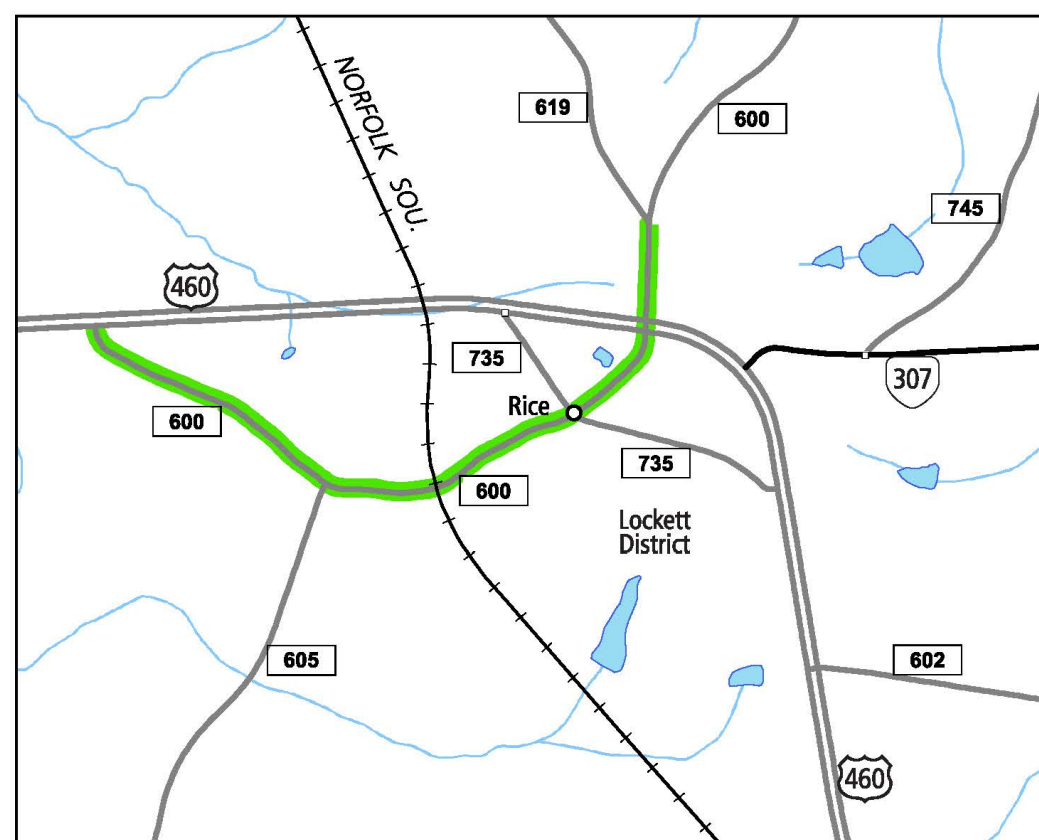
AN INVENTORY OF STATE MAINTAINED ROADS



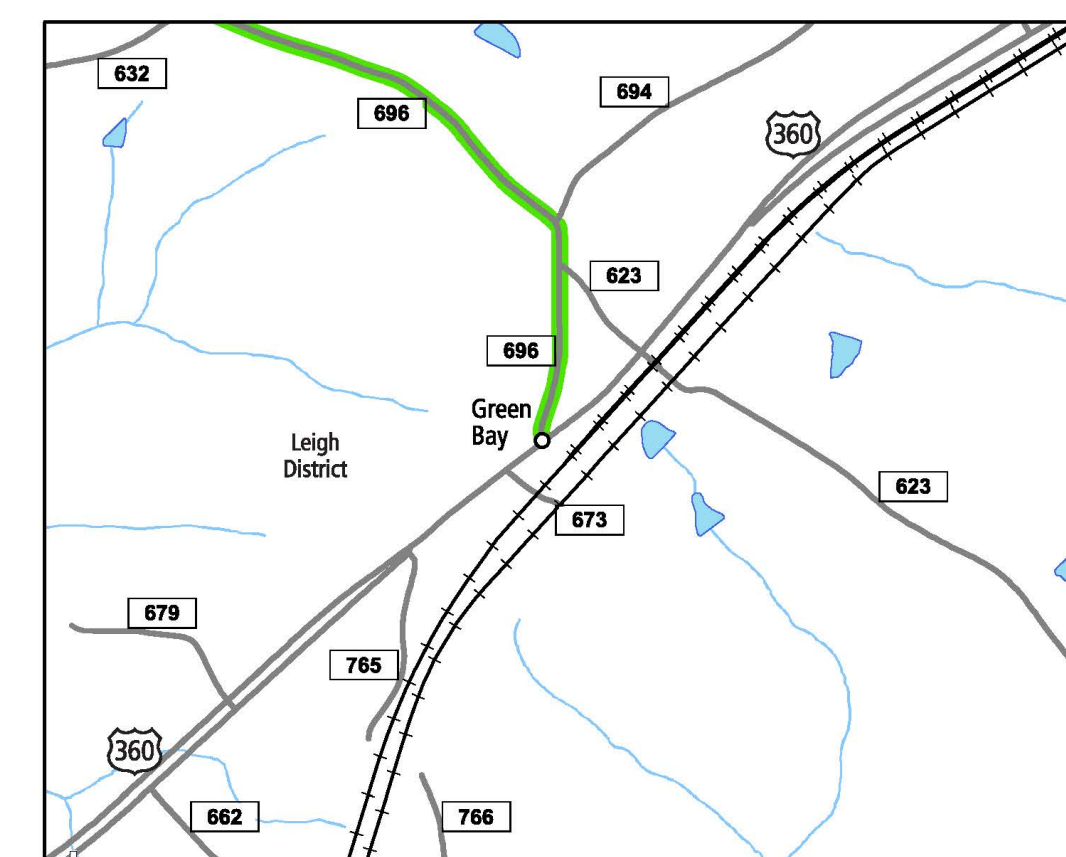
5 HAMPDEN SYDNEY AREA



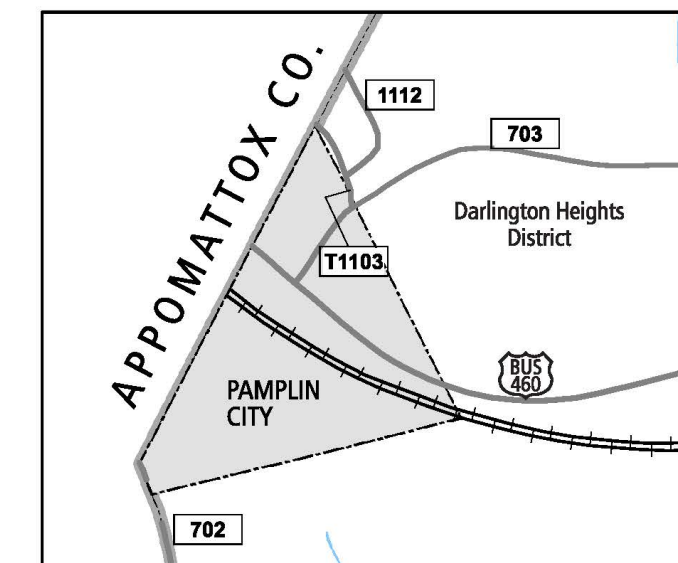
4 PROSPECT AREA



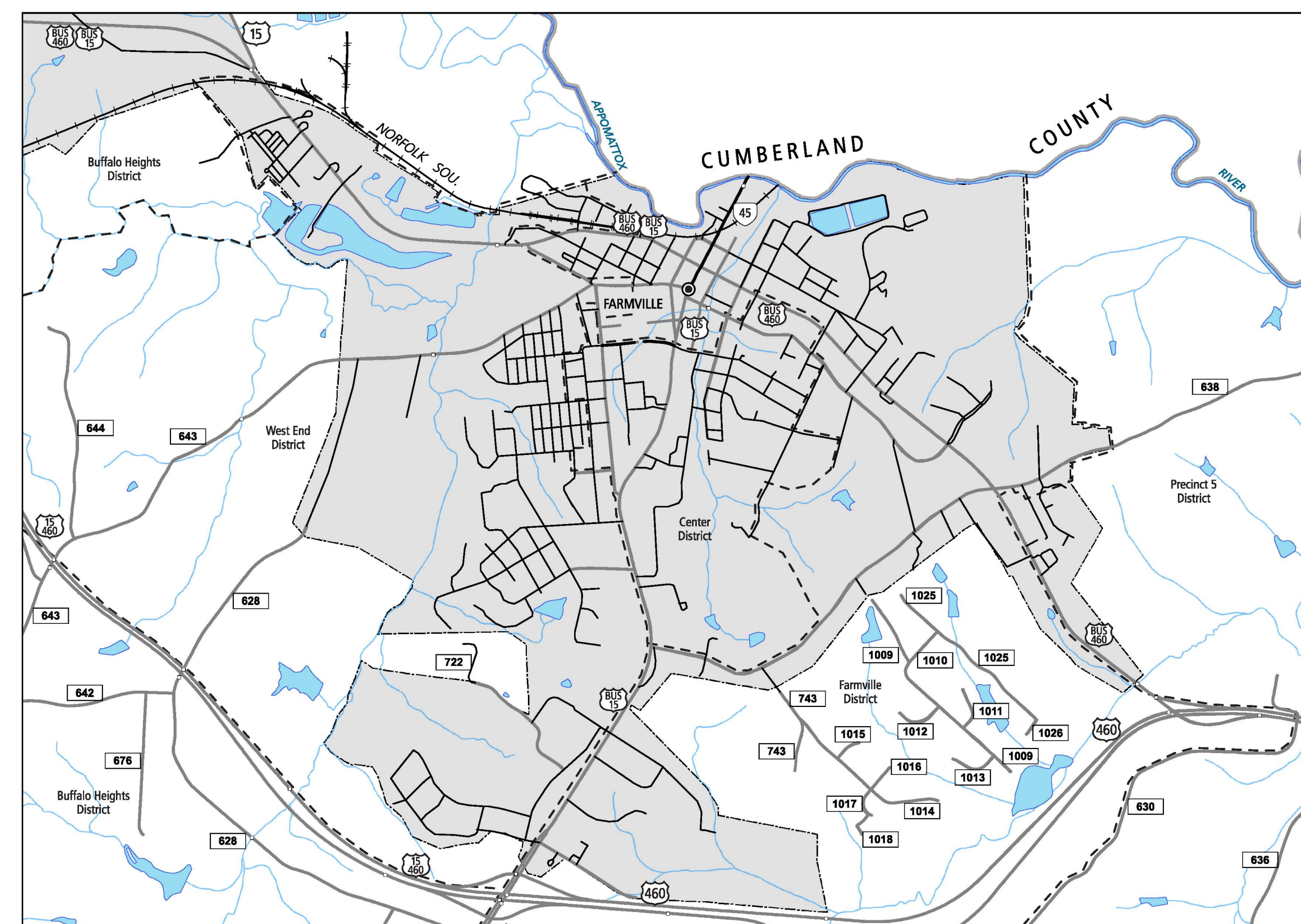
3 RICE AREA



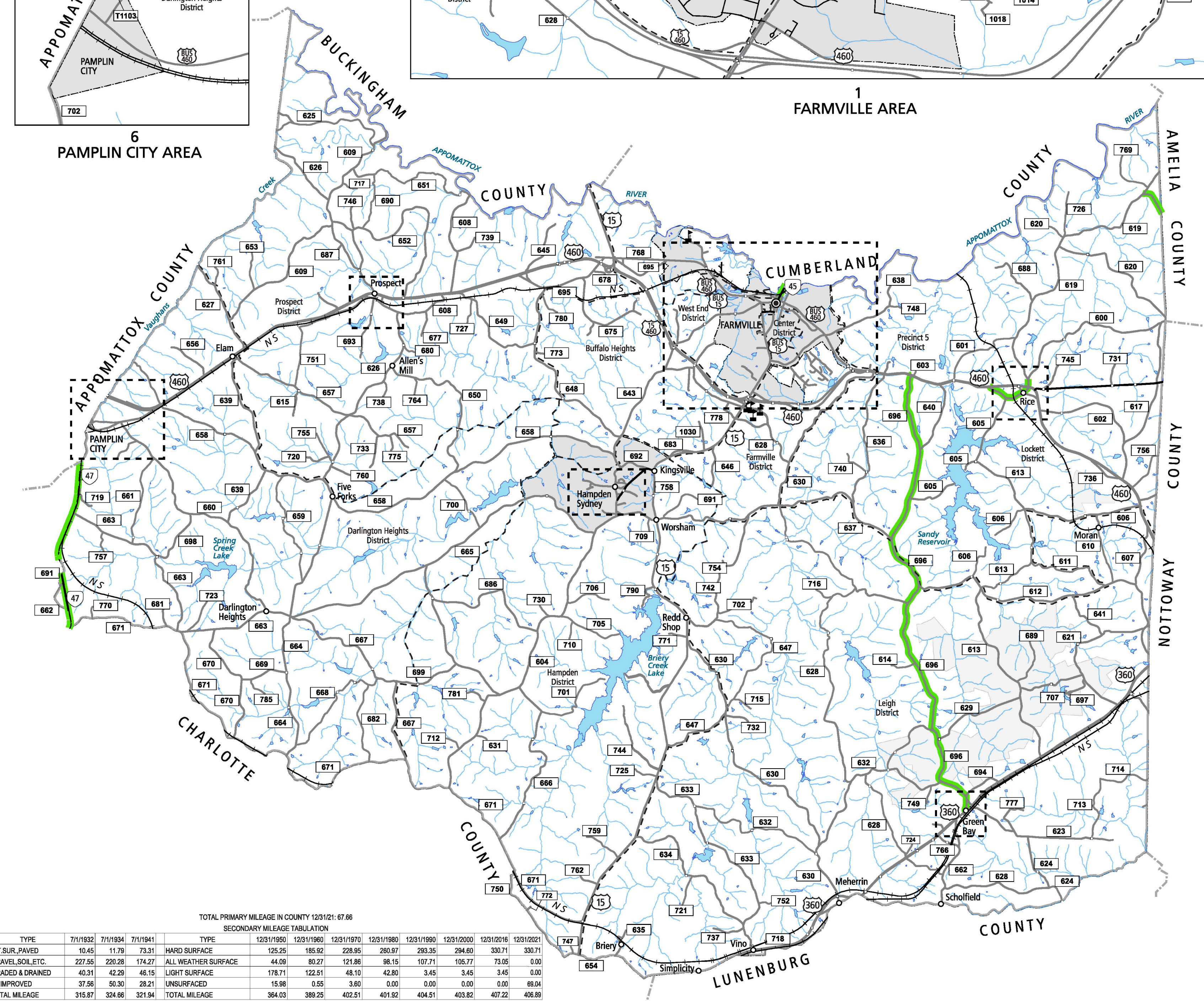
2 GREEN BAY AREA



6 PAMPLIN CITY AREA



1 FARMVILLE AREA



TOTAL PRIMARY MILEAGE IN COUNTY 12/31/21: 67.66

SECONDARY MILEAGE TABULATION

TYPE	7/1/1932	7/1/1934	7/1/1941	TYPE	12/31/1950	12/31/1960	12/31/1970	12/31/1980	12/31/1990	12/31/2000	12/31/2016	12/31/2021
BIT SURF. PAVED	10.45	11.79	73.31	HARD SURFACE	125.25	165.92	228.95	290.97	293.35	294.80	330.71	330.71
GRAVEL SOIL, ETC.	227.85	220.28	174.27	ALL WEATHER SURFACE	44.09	80.27	121.86	98.15	107.71	105.77	73.05	0.00
GRADED & DRAINED	40.31	42.29	48.15	LIGHT SURFACE	178.71	122.51	48.10	42.80	3.45	3.45	0.00	
UNIMPROVED	97.56	92.90	28.21	UNSURFACED	15.98	0.55	3.60	0.00	0.00	0.00	89.94	
TOTAL MILEAGE	315.87	324.66	321.94	TOTAL MILEAGE	364.03	389.25	402.51	401.92	404.51	403.82	407.22	406.89