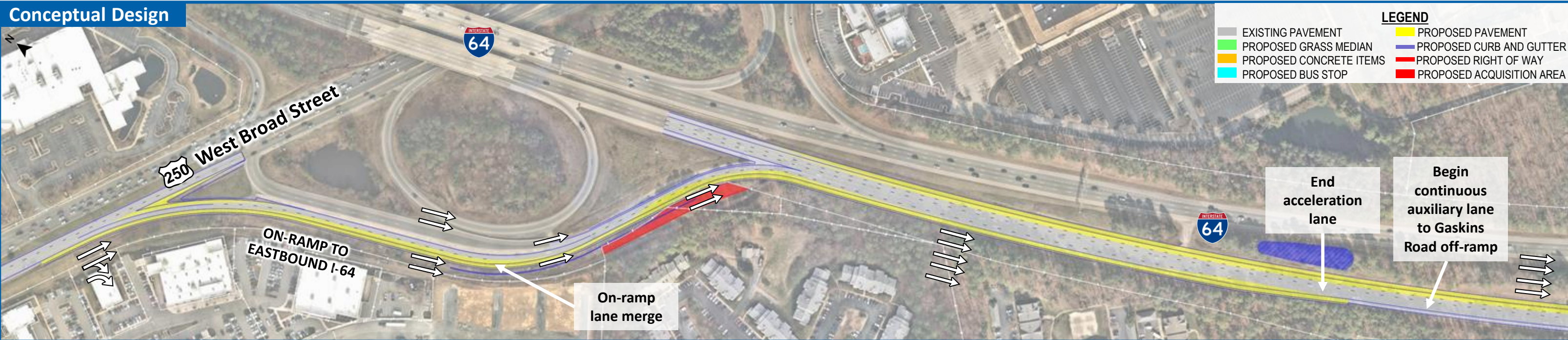


EASTBOUND US 250 TO EASTBOUND I-64

Recommended Improvements

Conceptual Design



Improvements Description

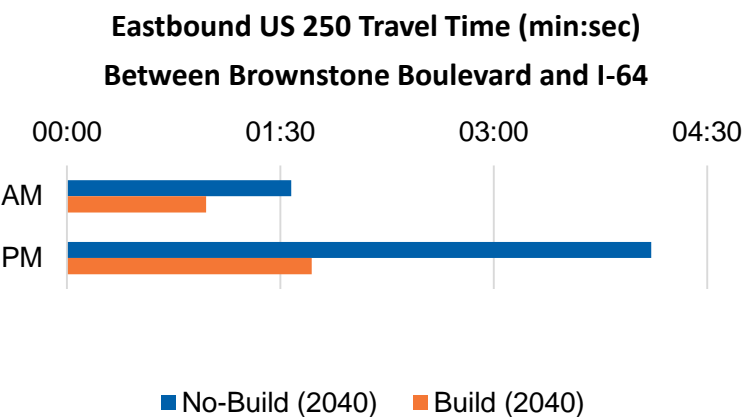
The improvements proposed at this location include:

- Restriping the middle eastbound US 250 through lane to a shared through/right to allow two lanes to exit for eastbound I-64.
- Widening the eastbound US 250 ramp to eastbound I-64 to two lanes.
- Extending the two-lane on-ramp to merge onto I-64 and provide an additional travel lane between the US 250 and Gaskins Road interchanges.
- The additional eastbound I-64 travel lane requires a rebuild of the Cox Road overpass.

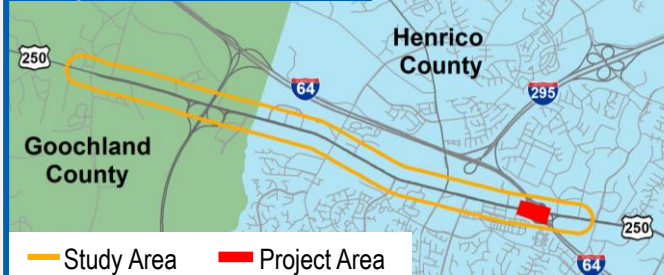
These improvements are expected to allow for better eastbound vehicular positioning approaching the interchange, increase merging capacity, and improve safety along eastbound I-64.

Traffic Operations Results

Eastbound US 250 to Eastbound I-64 On-Ramp Average Speed		
	AM Peak	PM Peak
No-Build (2040)	29 mph	19 mph
Build (2040)	33 mph	32 mph



Project Location

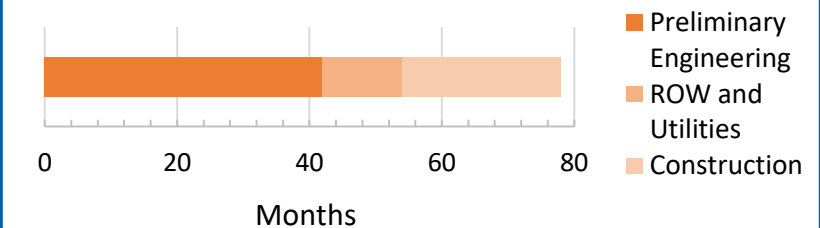


Safety Results

Restriping the middle eastbound US 250 through lane to allow two lanes onto the on-ramp to eastbound I-64 is expected to reduce merging crashes on US 250 and decrease rear-end crashes related to congestion from the merging movement. The additional auxiliary lane on eastbound I-64 is expected to reduce the number of crashes on eastbound I-64 by approximately 1.9 crashes per year.

Project Schedule & Preliminary Cost

Project schedules and cost estimates were developed based on information available at the time of study and should be reassessed prior to submitting funding applications.



Phase	Cost Estimate (2020 Dollars)
Preliminary Engineering	\$8,573,000
ROW and Utility Relocation	\$887,000
Construction	\$55,324,000
Total Cost	\$60,288,000