



# ARTERIAL

PRESERVATION PROGRAM

Route 220 Preservation and Improvement Plan

Public Information Meeting

*November 7, 2019*



# Tonight's Agenda

- Presentation
  - What is the Arterial Preservation Program (APP)?
  - Why study the Route 220 corridor?
  - Improvement identification process
- Review boards and handouts
  - Boards: Proposed intersection-specific recommendations
  - Handouts:
    - Study Area Map
    - Innovative Intersection Information
    - Corridor Recommendations

# Arterial Preservation Program

Background

# What is the Arterial Preservation Program?

- The **Arterial Preservation Program** is designed to preserve and enhance the safety and capacity of the critical transportation highways included in the **Arterial Preservation Network**
- Within the framework of the **Arterial Preservation Program**, VDOT is developing methodologies to consistently and programmatically evaluate the corridors through the use of **Arterial Preservation Plans**, creating a toolbox of safety, preservation, and enhancement strategies and identifying opportunities for implementation.

# Why the Route 220 APP?

- Safety Concerns
- Operational challenges
- Preparing for future traffic and economic development reduces the need for expensive, disruptive “retrofit” projects
- Route 220 is anticipated to see additional commercial and residential development
- Preparing for planned growth allows us to preserve and enhance the Route 220 corridor while supporting economic development



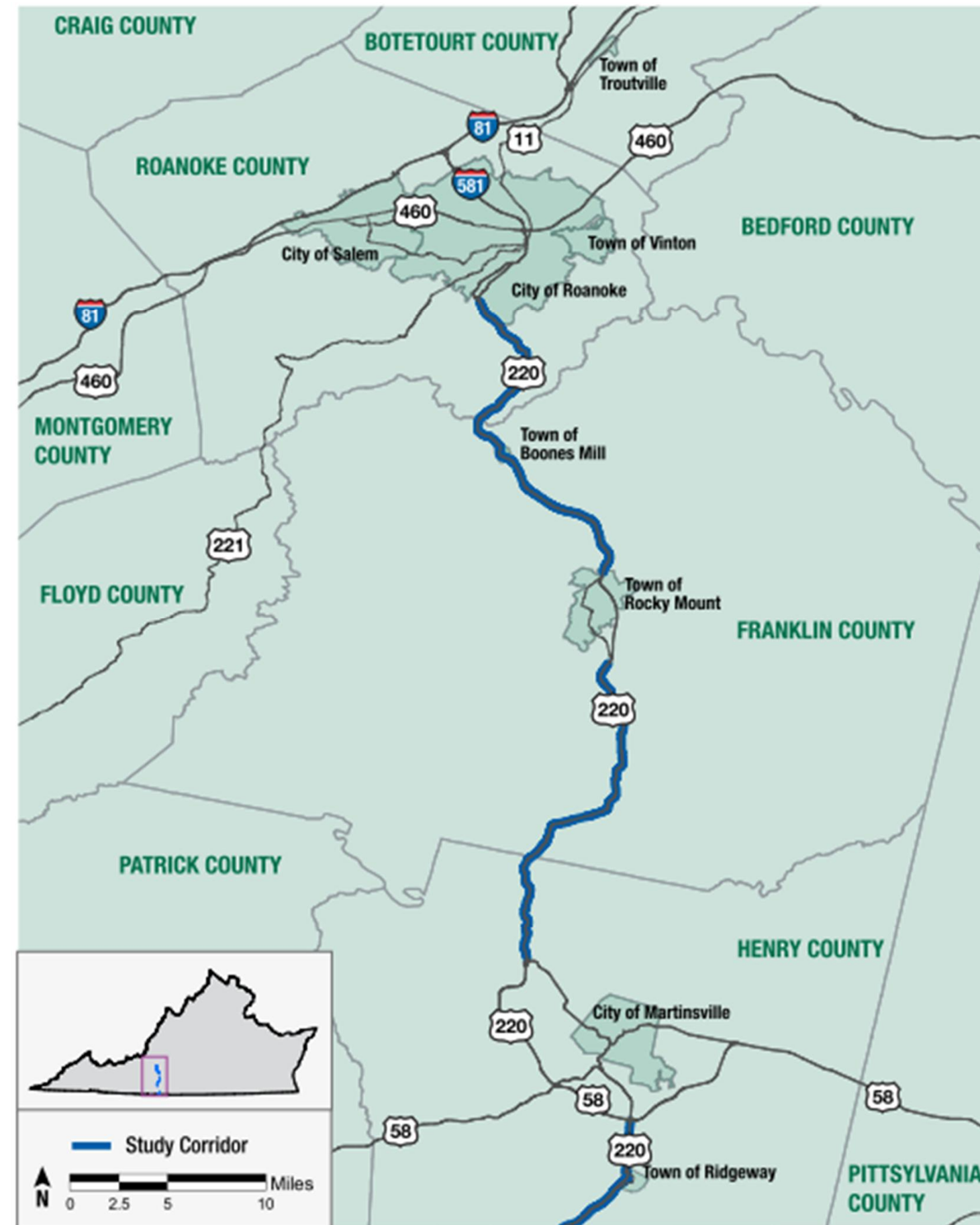
# Arterial Preservation Program

Route 220 Arterial Preservation Plan

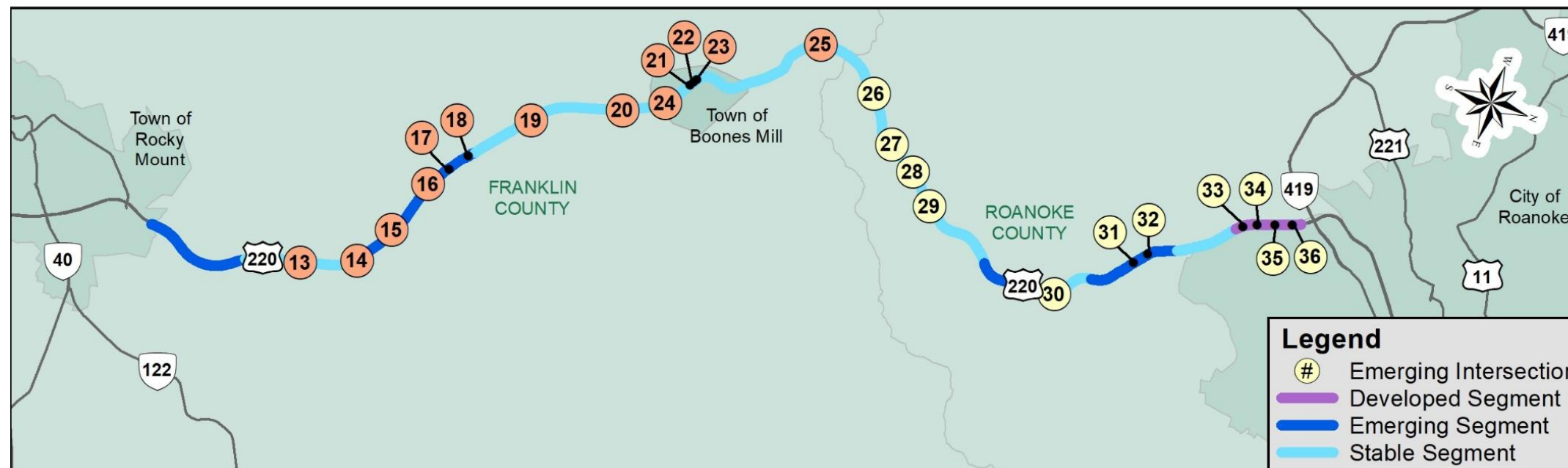
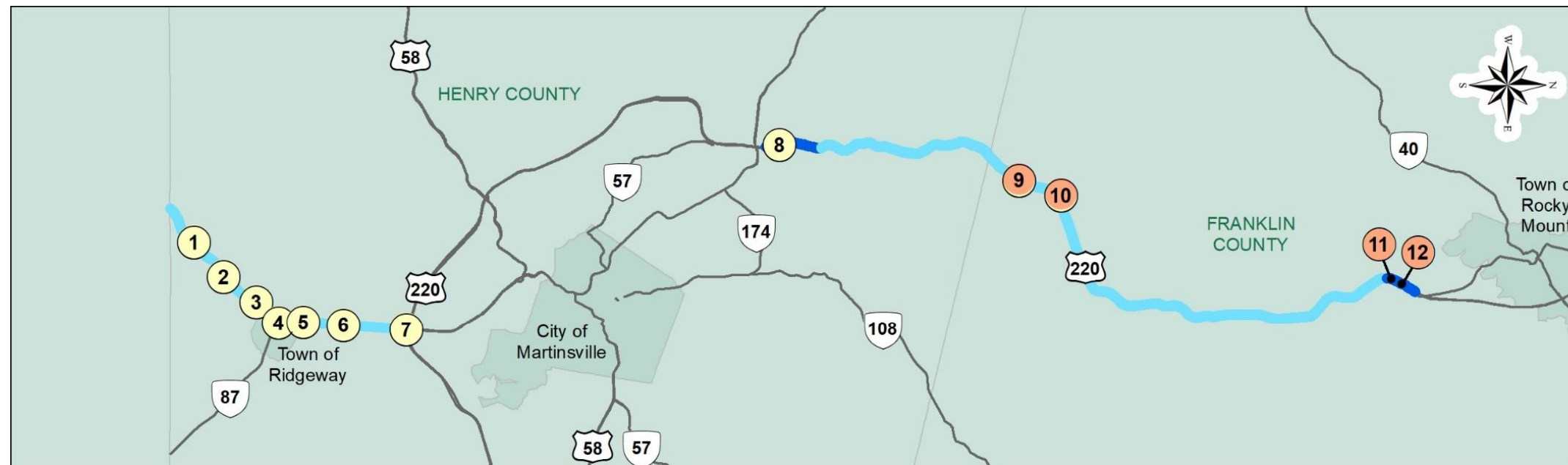


# Route 220 APP

- Route 220 from NC State Line to City of Roanoke
- Approximately 43 miles
- Limited access portions not included (i.e., Rocky Mount and Martinsville)



# Route 220 APP Intersections

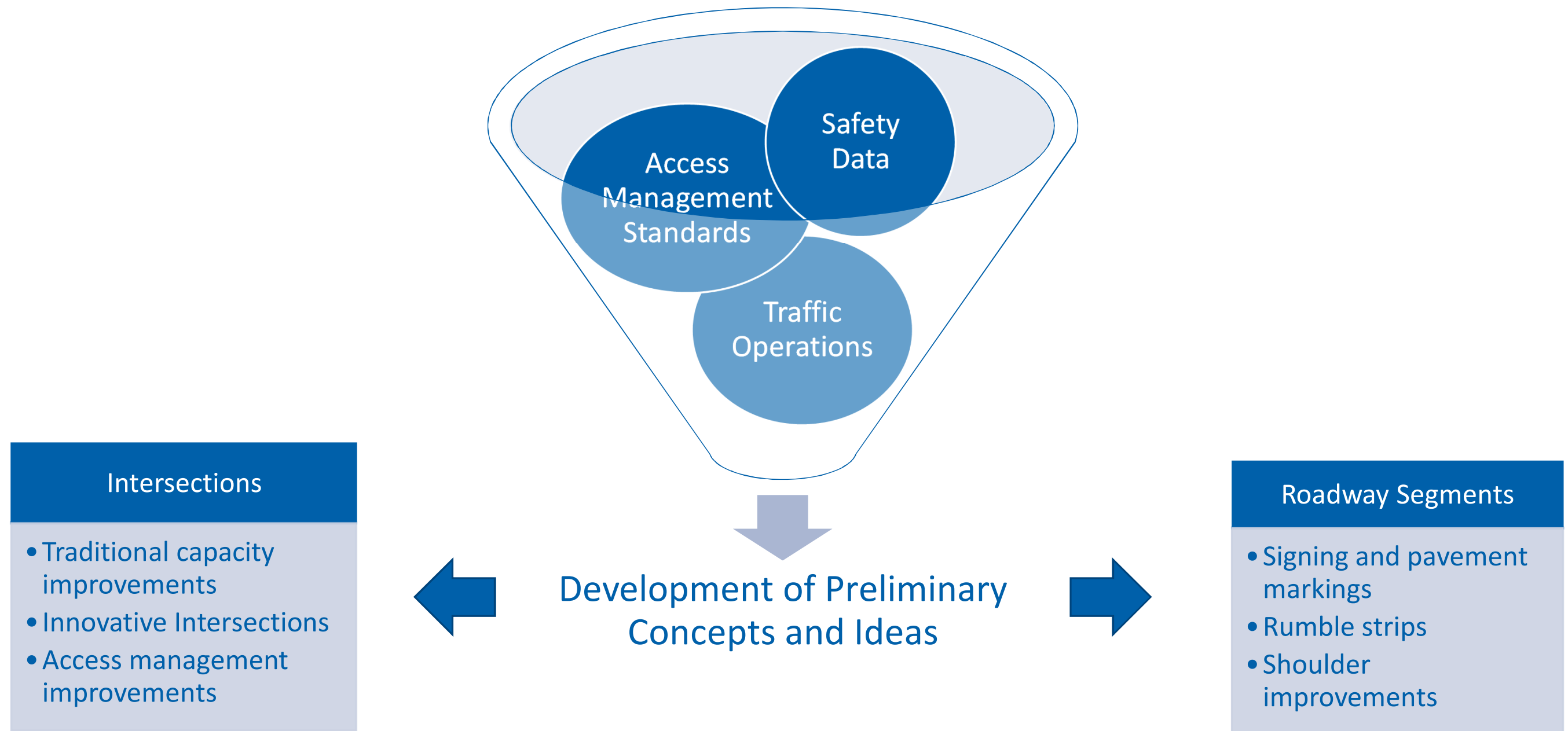


**Legend**

- # Emerging Intersection
- Developed Segment
- Emerging Segment
- Stable Segment

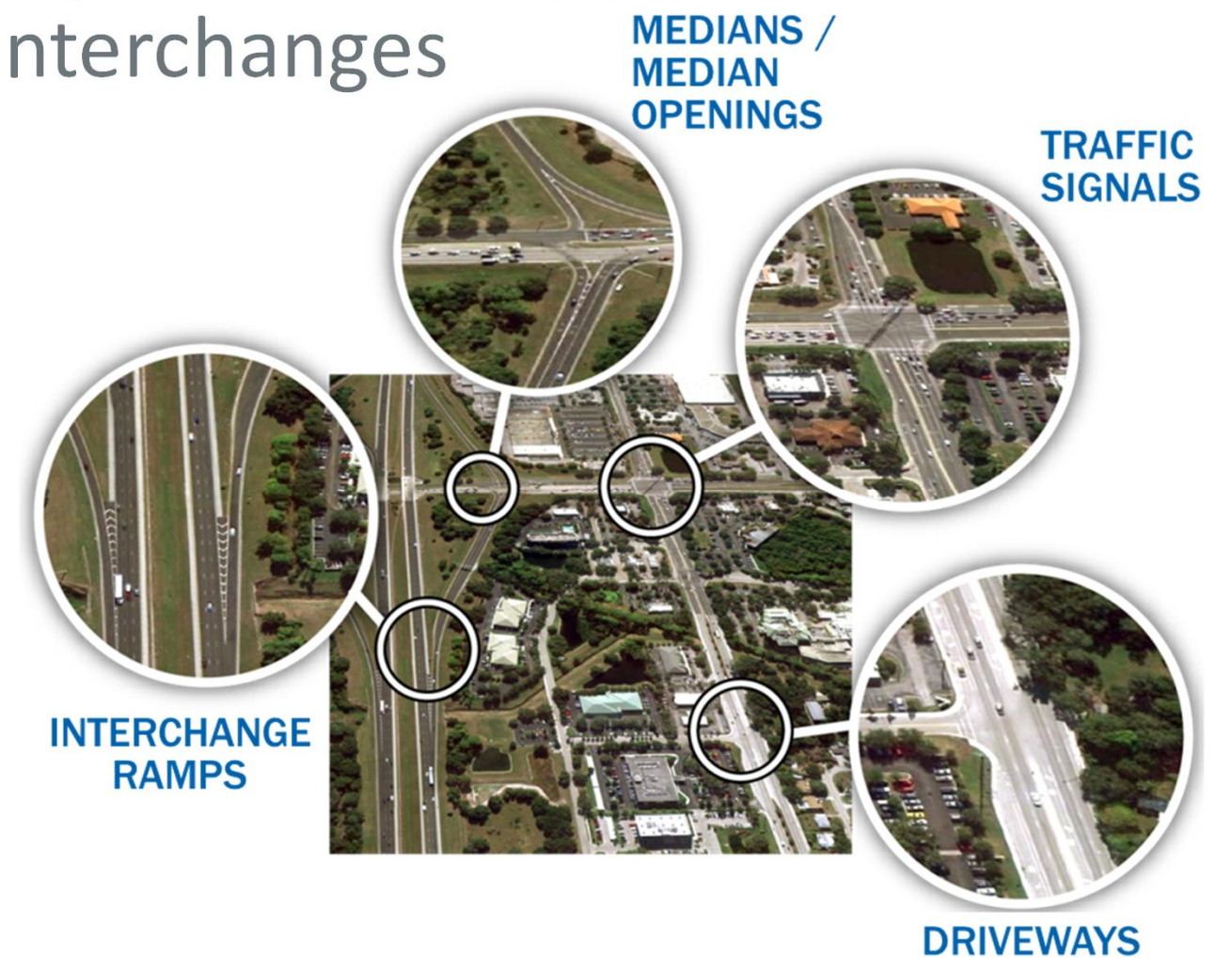


# Improvement Identification Process



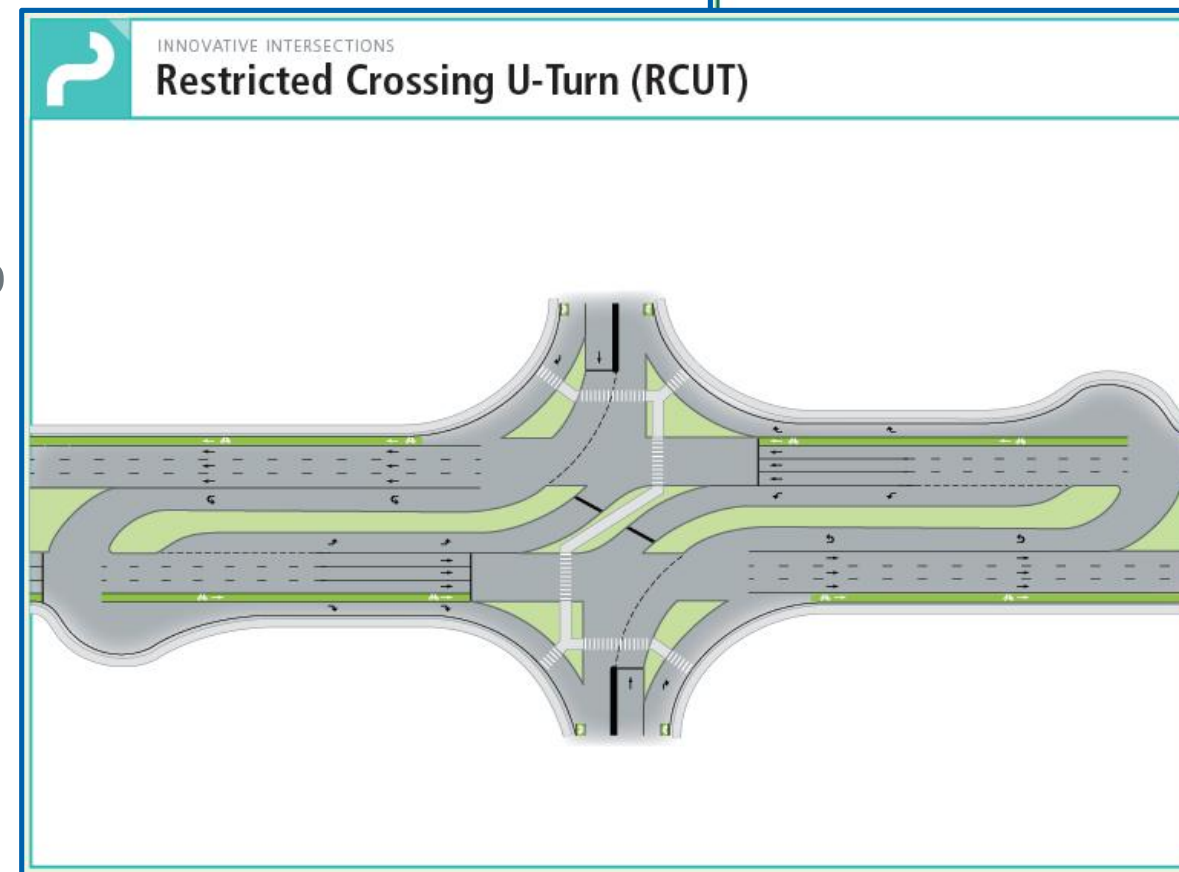
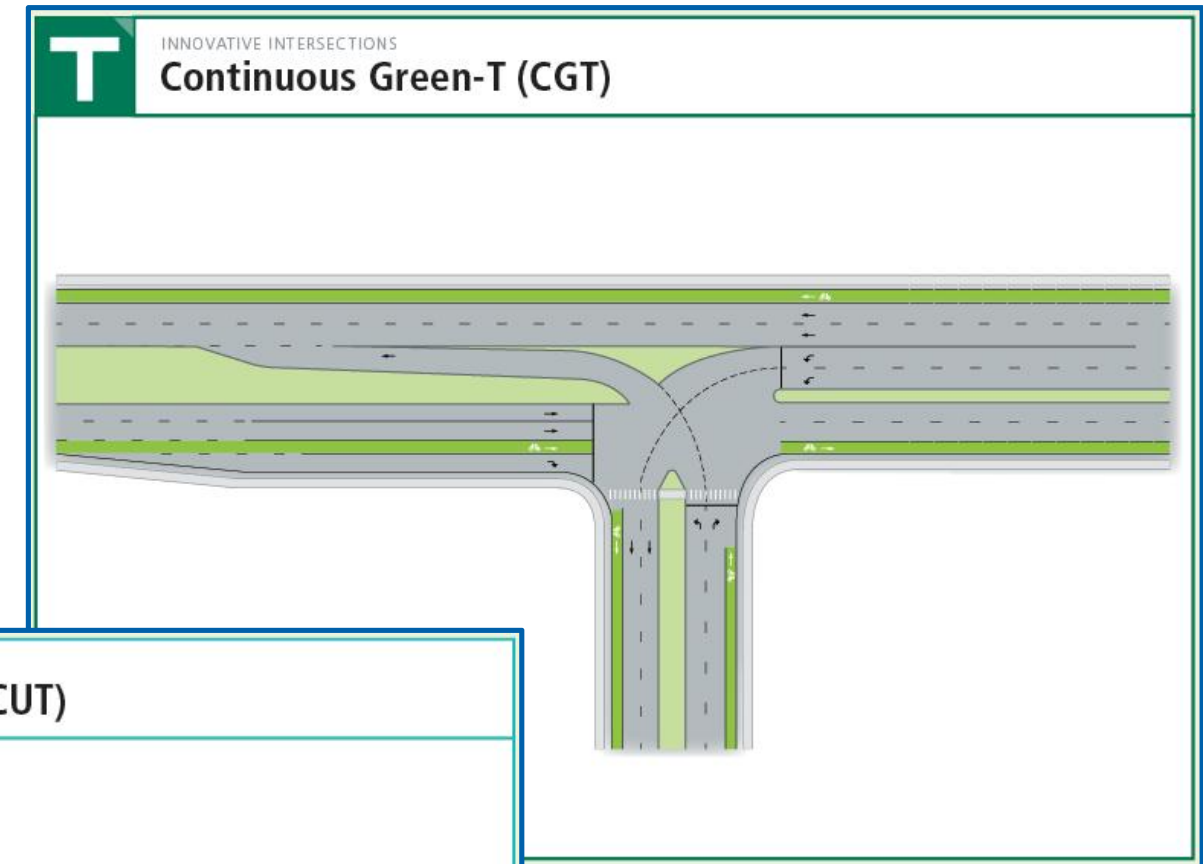
# Access Management

- Involves the location, spacing, and design of driveways, medians, median openings, traffic signals, and interchanges
- Benefits:
  - Increased Signal Spacing Benefits
    - Improves traffic flow
    - Reduces congestion
    - Improves air quality
  - Increased Driveway Spacing Benefits
    - Reduces number of potential conflicts
    - Increases roadway speeds
    - Reduces the rate of car crashes



# Innovative Intersections

- Intersection designs which:
  - Improve safety
  - Reduce delay
  - Increase efficiency
- Can reduce delays and crashes as much as 50%
- Also known as:
  - Alternative
  - Non-traditional
  - Unconventional
  - Reduced Conflict



<http://www.virginiadot.org/innovativeintersections/>

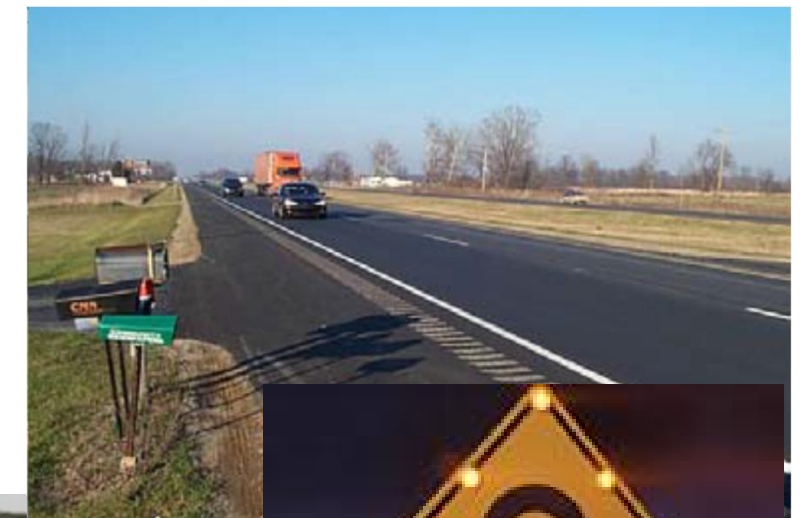


# Safety Improvements

- Includes signage, rumble strips, guardrail, paved shoulders, delineators, beacons, markings, and vegetation removal
- Benefits:
  - Improves sight distance
  - Improves driver awareness
  - Guides drivers more effectively
  - Reduces conflict points
  - Improves compliance with traffic control devices and traffic laws



W1-1a





# Proposed Intersection Recommendations

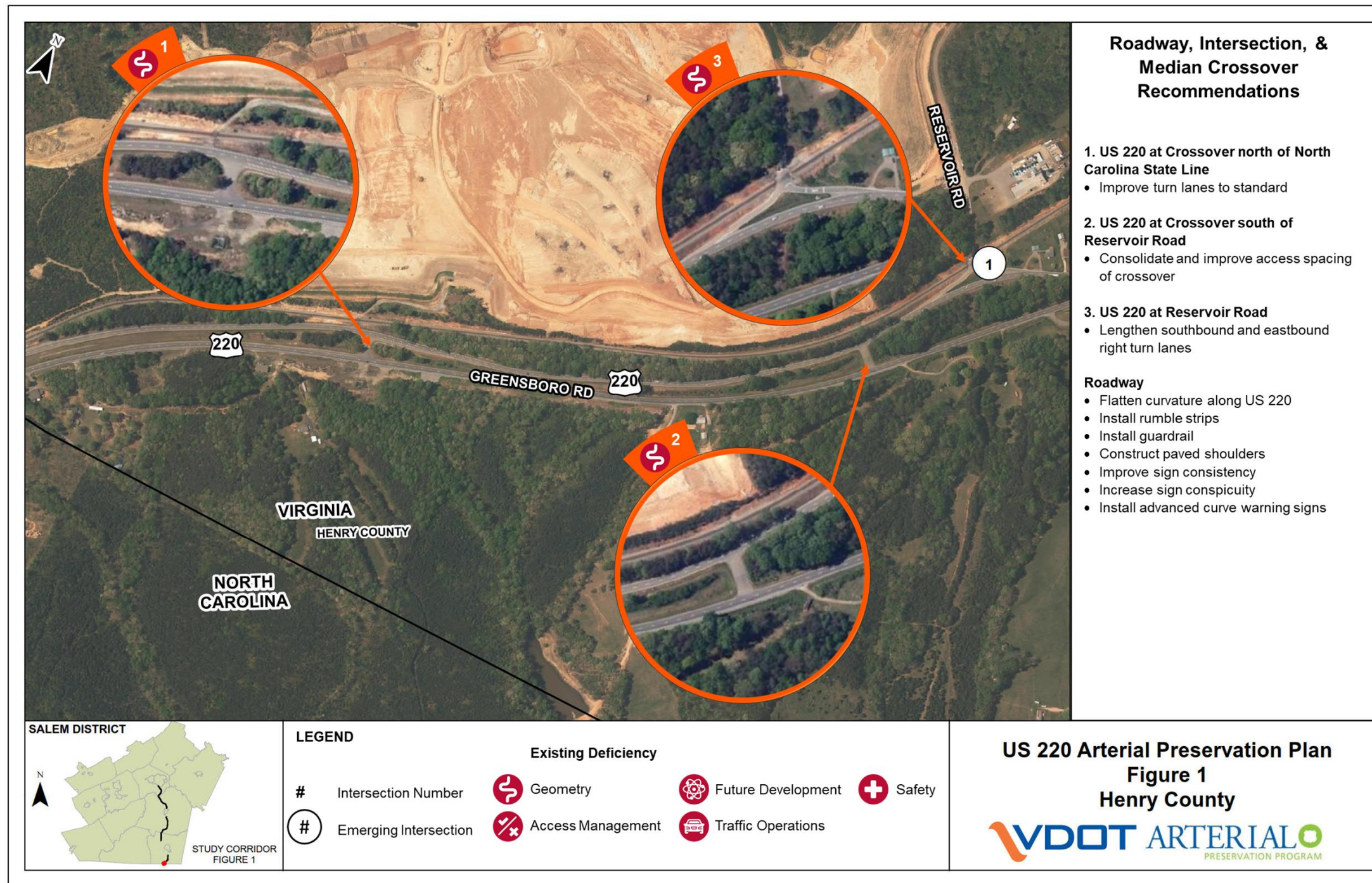
## Route 220 at Henry Road

Reccomendation: Unsignalized  
Continuous Green-T  
Implementation: Mid-Term  
Cost: \$\$





# Proposed Corridor Recommendations



# Community Information

- Recommendations were identified along the corridor and are available tonight for your information
- **Intersection-Specific Boards**
  - Henry County – 1 Board
  - Franklin County – 2 Boards
  - Roanoke County – 2 Boards
- **Corridor Recommendations**
  - 11x17 sheets with median crossover recommendations
- Comment Sheets